

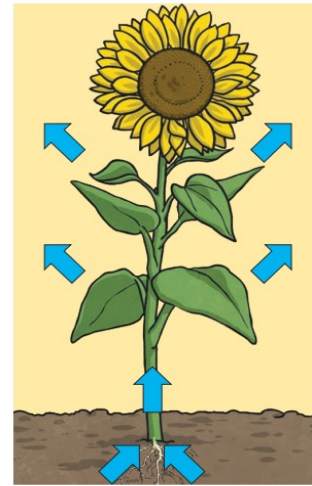
Year 3 Plants

Key vocabulary

roots	Anchor a plant in place. The roots also absorb water and nutrients from the soil.
stem/trunk	Transports water and nutrients around the plant. It also holds the leaves/flowers up in the air.
leaves	They use sunlight and water to produce the plant's food.
flower	The part of a plant that bears seeds and makes reproduction possible.
pollen	This is a very fine powder that is produced by the male part of the flower.
pollination	When pollen is transferred to female parts of a flower. This can be done by wind or insects.
seed formation	Seeds can develop after pollination. They can be found in berries or fruits.
seed dispersal	Seeds can be dispersed in different ways, for example, wind, animals or water.
germination	When a seed sprouts a root and shoot.

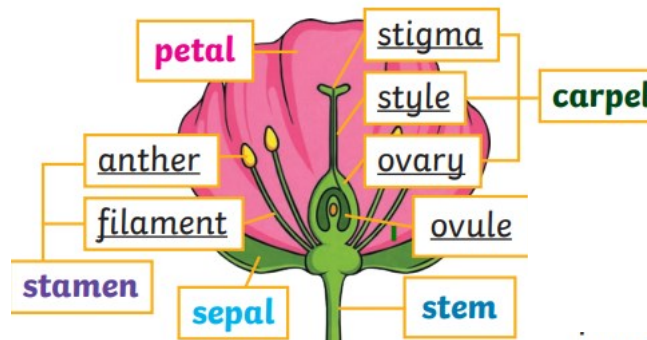
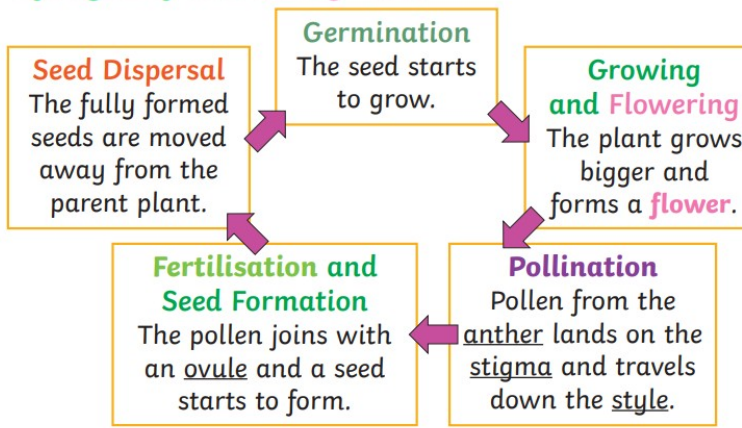
How Water Moves through a Plant

1. The **roots** absorb water from the soil.
2. The **stem** transports water to the **leaves**.
3. Water **evaporates** from the **leaves**.
4. This **evaporation** causes more water to be sucked up the **stem**.



The water is sucked up the **stem** like water being sucked up through a straw.

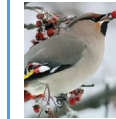
Life Cycle of a Flowering Plant



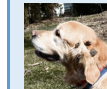
Methods of seed dispersal



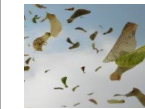
When the seed pod explodes



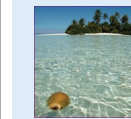
By animals eating them



On animals' fur



Wind



Water

What do plants need to grow?

